



## SPACES VARY BETWEEN

1,000 SF - 84,369 SF

## PRICE

Call for Pricing

## TERM

10 year

## HIGHLIGHTS

- Approx. 300,000 SF of retail plus available Out parcels
- Features several first-to-market retailers, such as Dick's Sporting Goods, Ulta Beauty, Ross Dress for Less, Kirklands, Maurices, Home Goods, Sierra etc.
- Located in North Bismarck off State Street (Highway 83), just south of Costco!
- Excellent signage & visibility!

# SPACE FOR LEASE

HAY CREEK SHOPS  
EAST LASALLE DR | BISMARCK, ND

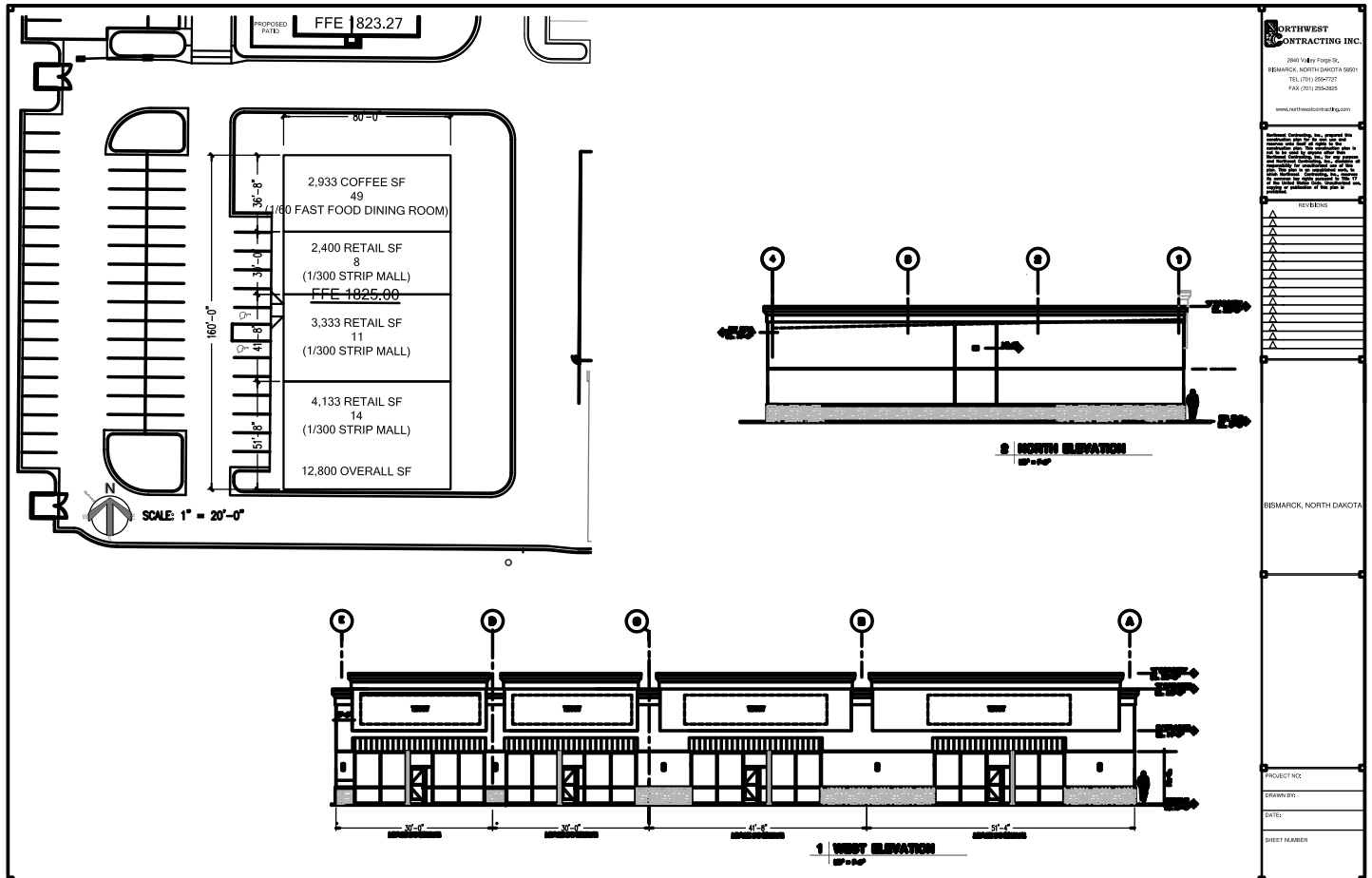
## » SITE PLAN



# SPACE FOR LEASE

HAY CREEK SHOPS  
EAST LASALLE DR | BISMARCK, ND

## » SITE PLAN



- Available up to 12,800 SF with buildout
- Options for utilizing prelease available space:
  - 5,000 SF - open concept, mens and woman's bathroom, back door and breakroom/ storage/ office in the back
  - 1,000 SF - sink, open concept, back half walled space and bathroom.

# SPACE FOR LEASE

HAY CREEK SHOPS  
EAST LASALLE DR | BISMARCK, ND

## » NEIGHBORHOOD AERIAL



- 1 Bismarck Motor Company
- 2 Furniture Row
- 3 Tractor Supply
- 4 Ale Works
- 5 Tires Plus
- 6 Skyzone
- 7 Costco
- 8 T-Mobile  
Aspen Dental
- 9 Mattress Firm  
Sleep Number  
AT&T  
Verizon  
Pancheros

- 10 Ross Dress for Less  
Maurices
- 11 Kirkland's  
Star Nails
- 12 Dollor Tree  
Pizza Ranch  
X-Golf
- 13 Dick's Sporting Goods
- 14 Michael's  
Ulta Beauty
- 15 Walmart
- 16 America's Mattress  
Gamestop

- 17 Starion Bank
- 18 Once Upon a Child  
Dunn Brothers Coffee
- 19 Wingate by Wyndham
- 20 Sažon
- 21 Charras & Tequila
- 22 Buffalo Wings & Ring

# SPACE FOR LEASE

HAY CREEK SHOPS  
EAST LASALLE DR | BISMARCK, ND



## » TENANT LIST

- Dick's Sporting Goods
- Ulta Beauty
- Michaels
- Ross Dress for Less
- Kirkland's
- Eyemart Express
- Dollar Tree
- Star Nails & Spa
- Mattress Firm
- Sleep Number
- Pizza Ranch
- Pizza Ranch Fun Zone
- Poke One
- T Mobile
- Aspen Dental
- AT&T
- Pancheros
- Verizon Be Mobile
- Tropical Smoothie

# FOR SALE

HAY CREEK SHOPS  
EAST LASALLE DR | BISMARCK, ND

## » LOCATION MAP



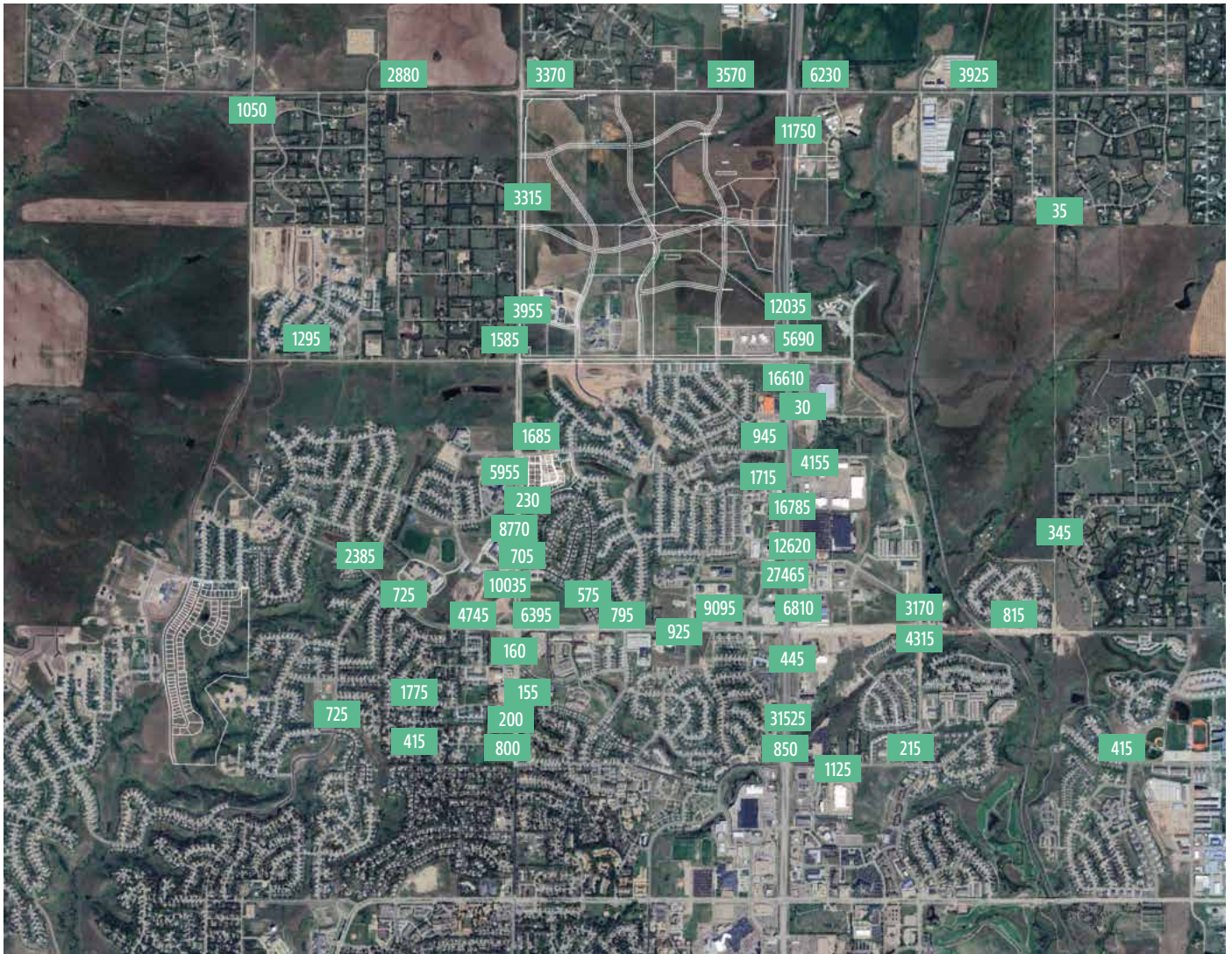
**JESSICA KNUTSON**  
Commercial Realtor

✉ [jessica@knutsonteam.com](mailto:jessica@knutsonteam.com)  
☎ 701-712-8100

# SPACE FOR LEASE

HAY CREEK SHOPS  
EAST LASALLE DR | BISMARCK, ND

## » TRAFFIC COUNTS - 2023



**JESSICA KNUTSON**  
Commercial Realtor

✉ [jessica@knutsonteam.com](mailto:jessica@knutsonteam.com)  
☎ 701-712-8100

# SPACE FOR LEASE

HAY CREEK SHOPS  
EAST LASALLE DR | BISMARCK, ND

## » BISMARCK-MANDAN COMMUNITY

The Bismarck-Mandan community is renowned for its vibrant offerings that contribute to an outstanding quality of life. The area combines the benefits of a thriving economic hub with a welcoming, hometown atmosphere.



### Economic Potential and Industry Profile

Bismarck, a key retail and healthcare hub in North Dakota, anchors the state's second-largest metropolitan area and serves as a crucial economic center for south-central North Dakota and northern-central South Dakota. As the state capital, Bismarck is a major employer in government operations, contributing to its robust economic profile despite national economic fluctuations over the past decade.



### Diverse Economy

Bismarck features a diverse economy anchored by healthcare, tourism, and government sectors. Mandan, within this metropolitan area, balances a small-town atmosphere with its role as a regional retail and trade hub. Leaders in Mandan are actively fostering growth by attracting new retail, dining, and hospitality establishments to meet community demands, utilizing available redevelopment sites and greenfield locations for commercial development.



### Healthcare Excellence

The region hosts two major medical centers, Sanford Health and CHI St. Alexius Health, alongside many clinics. Vibra Hospital in Mandan specializes in long-term acute care, complemented by a wide range of assisted living and long-term nursing care facilities. With over 575 beds, 350 physicians, and 7,500 healthcare professionals, these facilities, including the Bismarck Cancer Center, provide advanced care supported by state-of-the-art equipment.



### Population Growth and Stability

The Bismarck-Mandan Metropolitan Statistical Area (MSA), covering Burleigh and Morton counties in central North Dakota, has emerged as one of the nation's fastest-growing regions over the past decade, recognized by the U.S. Census Bureau. Renowned for its stable, diversified economy, the area consistently earns accolades from Forbes, the Milken Institute, and CNN Money for its robust business environment and high quality of life. Bismarck's designation as an All-American City in 1997 reflects its ongoing commitment to excellence, fostered by a community known for hard work, mutual support, and a balanced lifestyle.



### Transportation

Bismarck offers daily flights to Minneapolis, Denver, Chicago, and Dallas, with weekly flights to Las Vegas, Orlando, and Phoenix. Regional charter air and freight services are available. Burlington Northern Santa Fe and Dakota, Missouri Valley and Western Rail provide market access. Located on I-94 and U.S. Highway 83, Bismarck-Mandan ensures toll-free road access. The Northern Plains Commerce Centre (NPCC) in Bismarck provides immediate access to road, rail, and air transport.

# SPACE FOR LEASE

HAY CREEK SHOPS  
EAST LASALLE DR | BISMARCK, ND

## » BISMARCK-MANDAN COMMUNITY



### Recreation

Bismarck-Mandan offers diverse recreational activities, including theater, symphony performances, golf, boating, fishing, and hunting. The Bismarck Parks and Recreation District (BPRD) provides top-notch programs and facilities, earning Bismarck the title of Sports Illustrated Sportstown for North Dakota. The area also has a vibrant arts community with organizations like the Symphony Orchestra, Northern Plains Ballet, Shade Tree Players, and Dakota Stage Unlimited.



### Water Activities

The Missouri River and Lake Sakakawea offer numerous water sports opportunities. Bismarck has three outdoor public swimming pools, and Mandan's Raging Rivers Waterpark features slides, a lazy river, and a children's play area.



### Zoo

The Dakota Zoo in Bismarck, North Dakota's largest zoo, spans 90 acres and houses 600 animals across 125 species, attracting over 150,000 visitors annually.



### Golf

Bismarck-Mandan boasts seven excellent golf courses, including Hawktree Golf Club, listed among Golf Digest's top 100 public courses in the U.S., and Riverwood Golf Course, consistently recognized as one of Golf Digest's "Best Public Places to Play."



### Sports

Bismarck-Mandan is home to the AWHL's Bismarck Bobcats hockey team and offers a full range of high school and college sports. The Community Bowl and the Bismarck Aquatic Center host various sporting events.



### History

The Heritage Center on the State Capitol Grounds features a state-of-the-art museum. Historic sites like Fort Abraham Lincoln and the On-A-Slant Indian Village provide a glimpse into the region's frontier history.



### Parks & Recreation

The area offers over 50 miles of paved trails for various activities and a top-notch park system covering 17.5% of Bismarck's total area. The Parks and Recreation Departments of Bismarck and Mandan provide year-round activities for all ages.

# SPACE FOR LEASE

HAY CREEK SHOPS  
EAST LASALLE DR | BISMARCK, ND

## » BISMARCK, ND RESOURCES

**CITY OF BISMARCK**  
[www.bismarck.org](http://www.bismarck.org)

**BURLEIGH COUNTY**  
[www.burleighco.com](http://www.burleighco.com)

**BISMARCK-MANDAN CHAMBER EDC**  
[www.bismarckmandan.com](http://www.bismarckmandan.com)

**BISMARCK-MANDAN CONVENTION & VISITOR'S BUREAU**  
[www.bismarckmandancvb.com](http://www.bismarckmandancvb.com)

**NORTH DAKOTA TRAVEL & TOURISM**  
[www.ndtourism.com](http://www.ndtourism.com)

**BISMARCK MUNICIPAL AIRPORT**  
[www.bismarckairport.com](http://www.bismarckairport.com)

**BISMARCK EVENT CENTER**  
[www.bismarckeventcenter.com](http://www.bismarckeventcenter.com)

## CONNECT WITH HAY CREEK SHOPS



Hay Creek Shops





@haycreekshops



haycreekshops.com

**JESSICA KNUTSON**  
Commercial Realtor

 [jessica@knutsonteam.com](mailto:jessica@knutsonteam.com)  
 701-712-8100

# SPACE FOR LEASE

HAY CREEK SHOPS  
EAST LASALLE DR | BISMARCK, ND

## DISCLOSURE

This information has been obtained from sources we consider reliable; however, we do not provide any guarantees, express or implied, regarding its accuracy. All details regarding square footage, taxes, special assessments, income, and expenses are approximate. Buyers or tenants are advised to conduct their own independent investigations and base their decisions on those findings.