

## PARCELS

- Block 2, Lot 1 : 20 acres — \$875,000
- Block 1, Lot 3 : 8.19 acres — \$360,000
- Block 1, Lot 2 : 6.03 acres — \$264,000

## HIGHLIGHTS

- Just North of Dickinson's municipal boundary on the Truck Bypass Route
- Septic Sewer | Rural Water
- Utilities Available
- 3-Phase Power Along 33rd Street SW

# FOR SALE

NORTH DICKINSON LAND NEAR HWY 22  
33RD STREET SW | DICKINSON, ND

## PROPERTY DETAILS

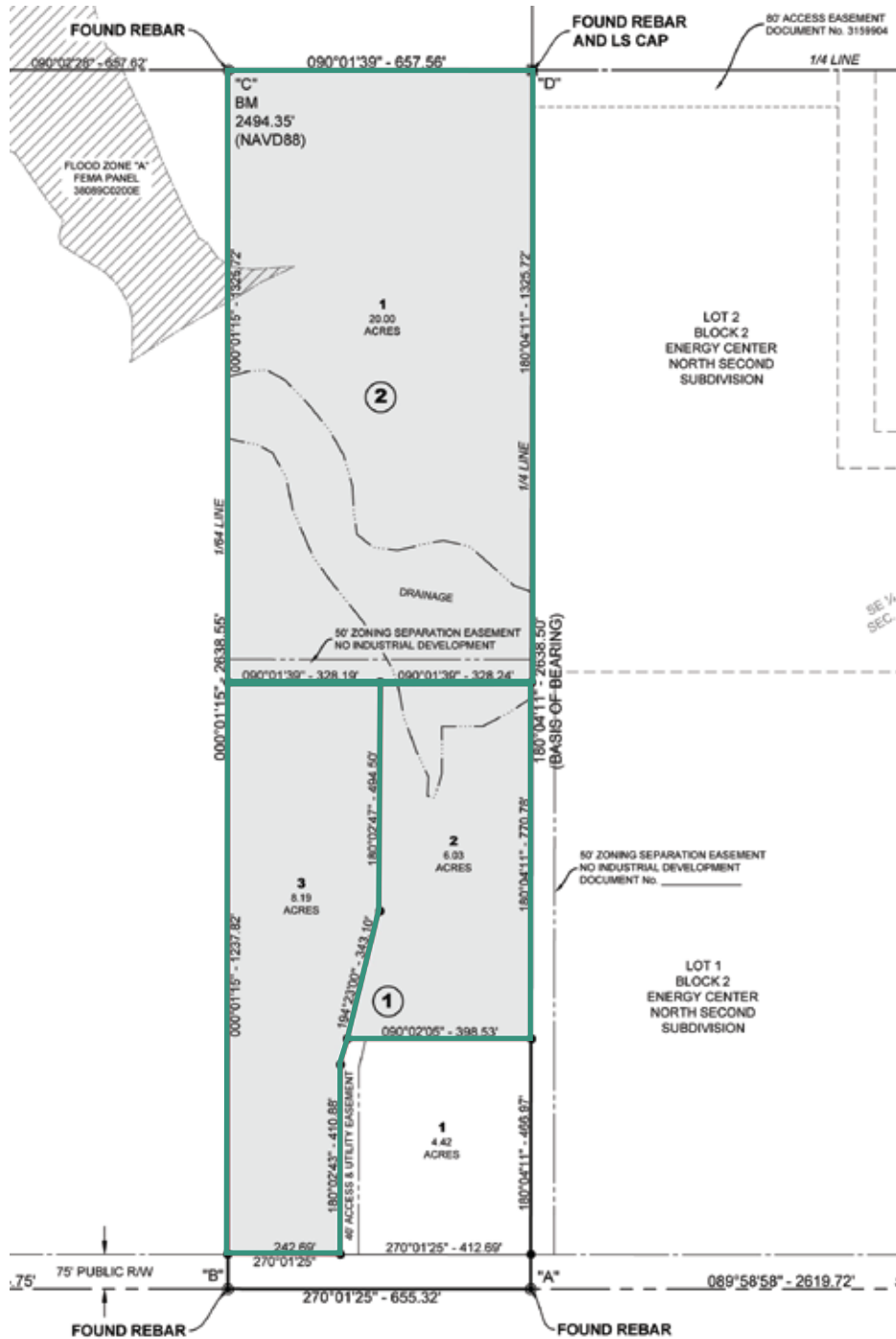
**PID#** 27-5545-02000-100  
**Legal** Lot 1, Block 2,  
North Energy Center Residential Subdivision  
**Lot Size** 20 Acres  
**2023 Taxes** \$209.83  
**Specials** None at this time.  
**Zoned** Rural Residential  
**Price** \$875,000

**PID#** 27-5545-01000-300  
**Legal** Lot 3, Block 1,  
North Energy Center Residential Subdivision  
**Lot Size** 8.19 Acres  
**2023 Taxes** \$292.71  
**Specials** None at this time.  
**Zoned** Rural Residential  
**Price** \$360,000

**PID#** 27-5545-01000-200  
**Legal** Lot 2, Block 1,  
North Energy Center Residential Subdivision  
**Lot Size** 6.03 Acres  
**2023 Taxes** \$274.88  
**Zoned** Rural Residential  
**Price** \$264,000

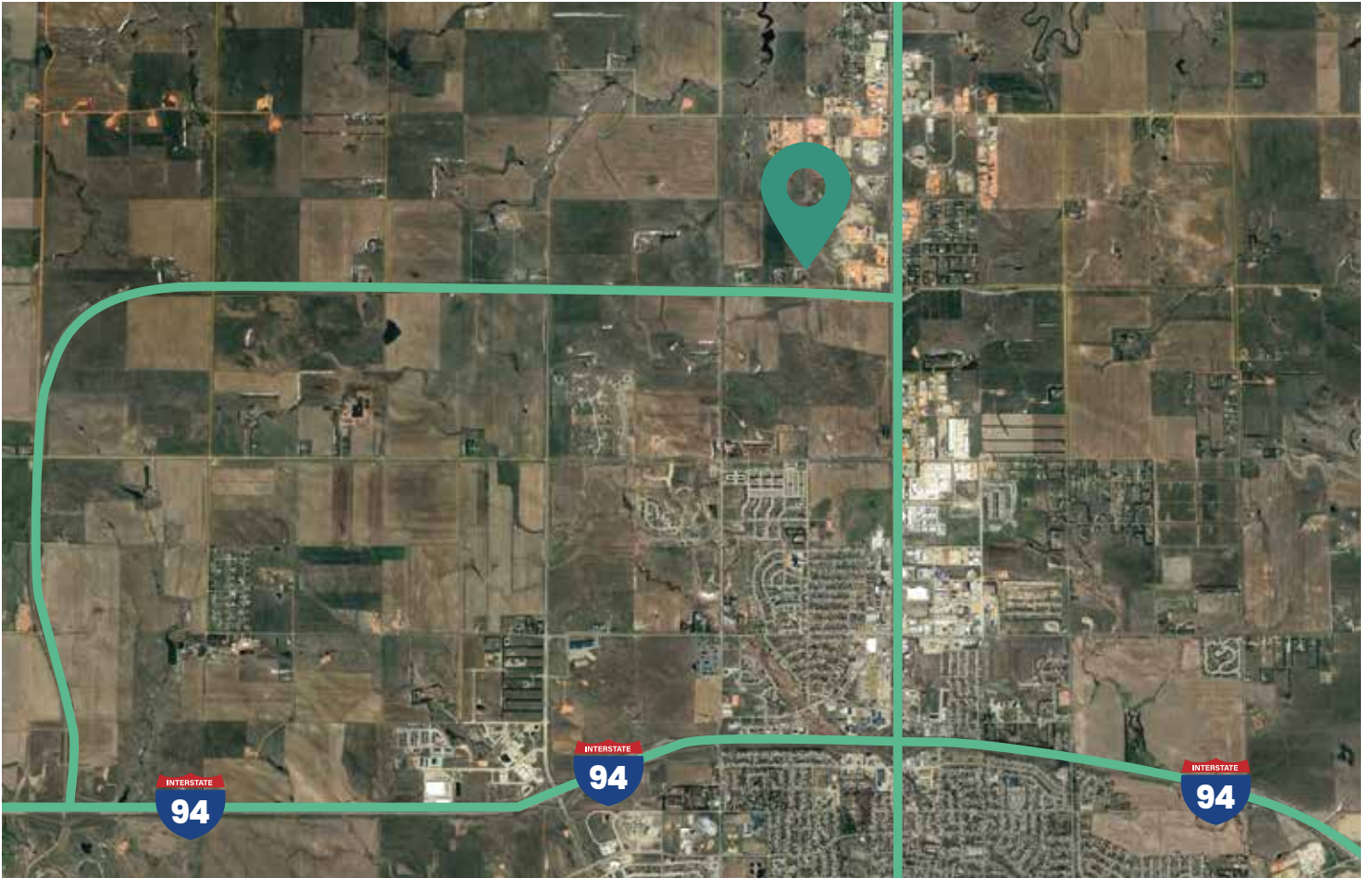
# NORTH ENERGY CENTER RESIDENTIAL SUBDIVISION

A PARCEL OF UNPLATTED LAND LOCATED IN THE EAST HALF OF THE EAST HALF OF THE SOUTHWEST QUARTER (E1/2E1/2SW1/4) OF SECTION 16, TOWNSHIP 140 NORTH, RANGE 96 WEST, OF THE FIFTH PRINCIPAL MERIDIAN, STARK COUNTY, NORTH DAKOTA



# FOR SALE

NORTH DICKINSON LAND NEAR HWY 22  
33RD STREET SW | DICKINSON, ND



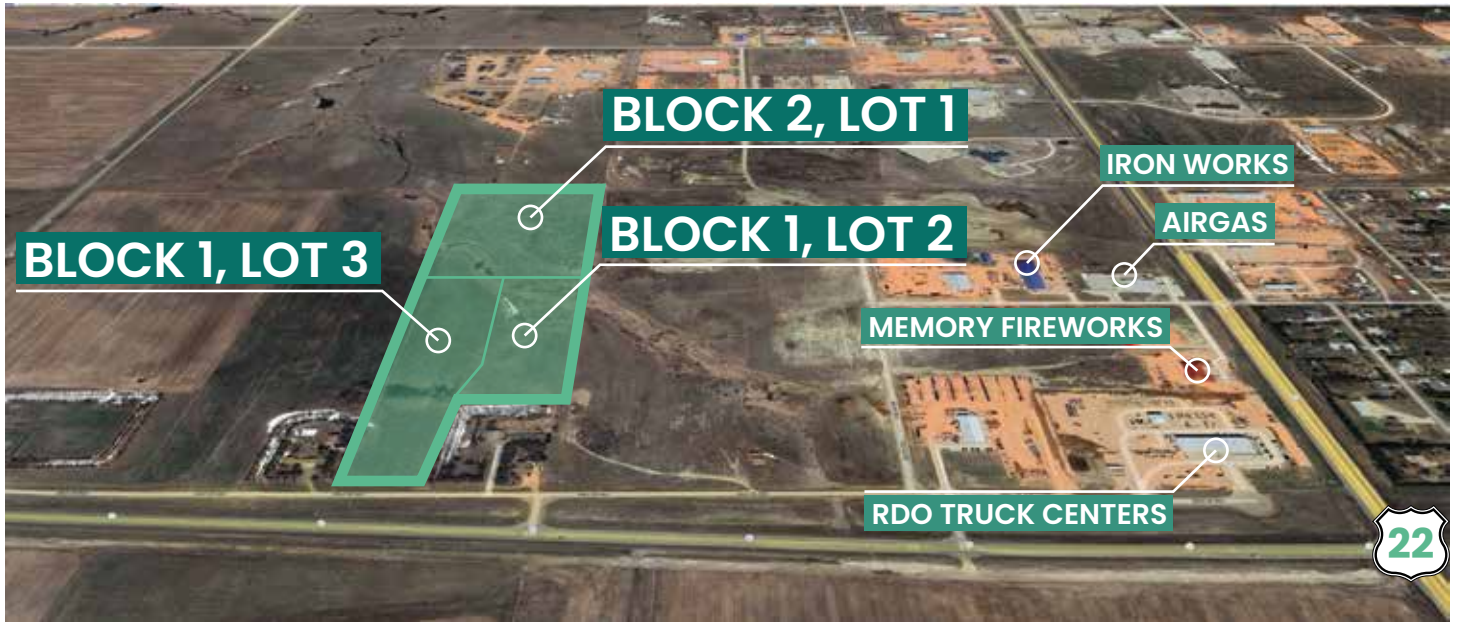
**JESSICA KNUTSON**  
Commercial Realtor

✉ [jessica@knutsonteam.com](mailto:jessica@knutsonteam.com)  
☎ 701-712-8100

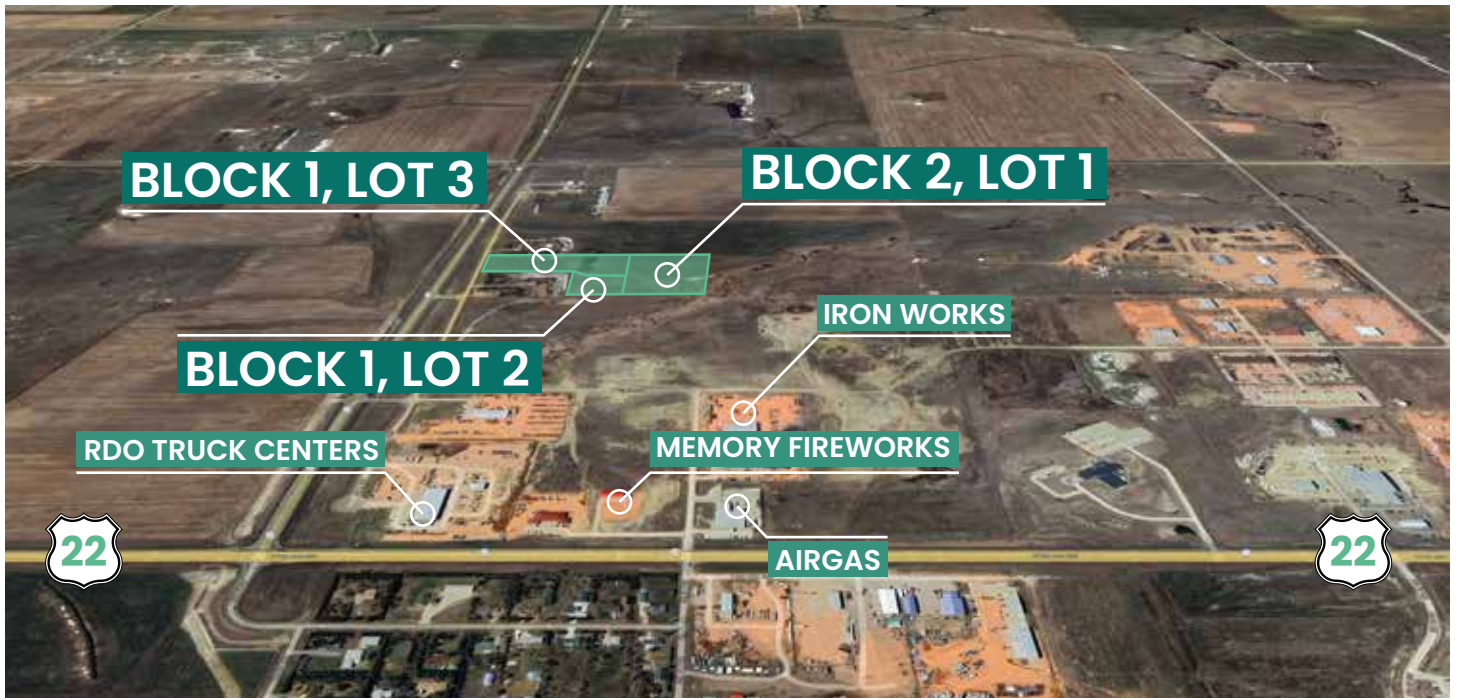
# FOR SALE

NORTH DICKINSON LAND NEAR HWY 22  
33RD STREET SW | DICKINSON, ND

## » AERIAL LOOKING SOUTH



## » AERIAL LOOKING EAST



# FOR SALE

NORTH DICKINSON LAND NEAR HWY 22  
33RD STREET SW | DICKINSON, ND

## DISCLOSURE

This information has been obtained from sources we consider reliable; however, we do not provide any guarantees, express or implied, regarding its accuracy. All details regarding square footage, taxes, special assessments, income, and expenses are approximate. Buyers or tenants are advised to conduct their own independent investigations and base their decisions on those findings.

---

### JESSICA KNUTSON

Commercial Realtor  
jessica@knutsonteam.com  
701-712-8100

### ALICIA REHBEIN

Nest Real Estate  
Cell: 701-290-6632  
Office: 701-483-5297