



SITE 1

Lot Size

13.19 ACRES | 574,556 SF +/-

Price

\$15.00 PSF

SITE 2

Lot Size

8.27 ACRES | 360,241 SF +/-

Price

\$10.00 PSF

HIGHLIGHTS

- Zoning: CG—Commercial
- Excellent visibility from Highway 83!
- Located North of Costco and across from Fleet Farm
- Hay Creek Shops' retailers such as Dick's Sporting Goods, Ross, and Ulta
- Willing to subdivide
- Additional 8.27 acres for sale

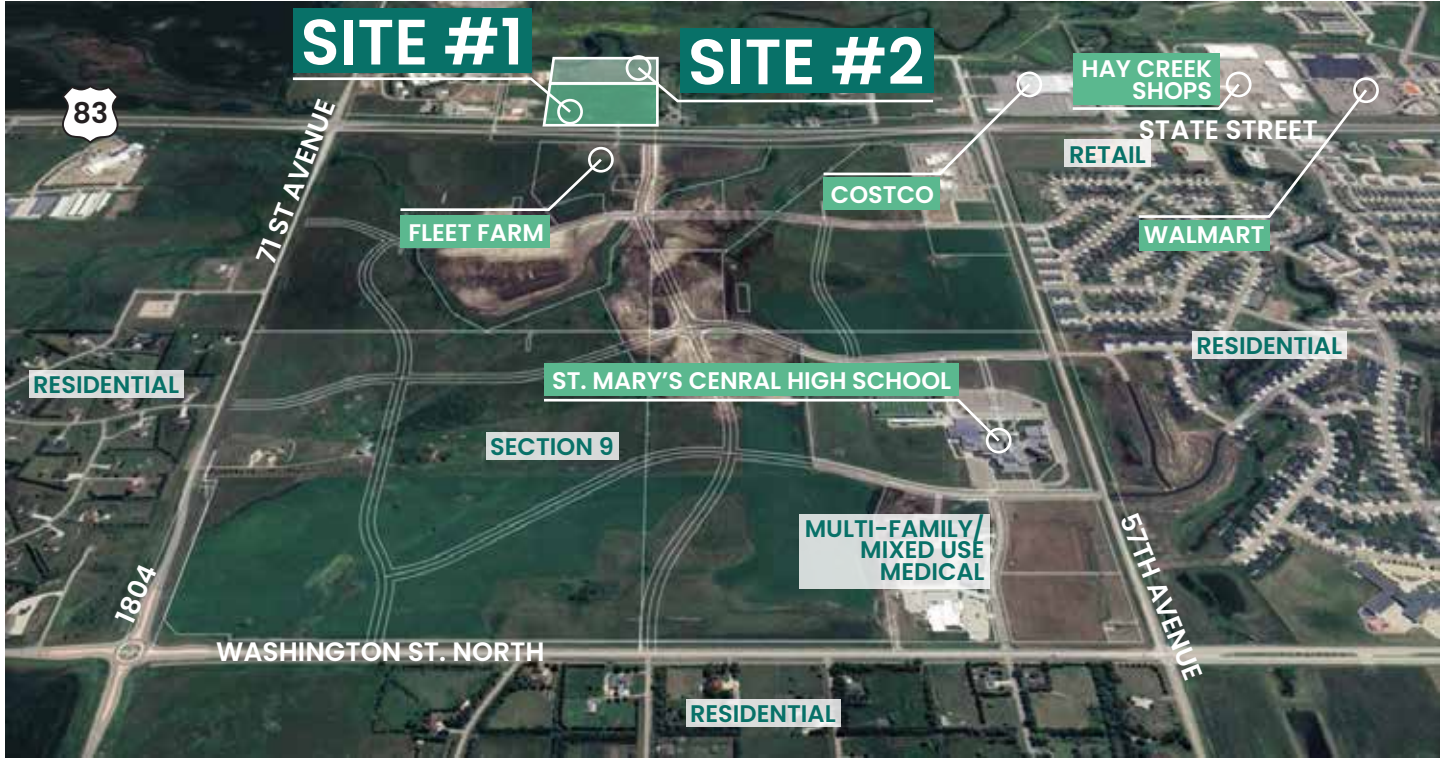
FOR SALE

6341 RIDGEDALE STREET | BISMARCK, ND

» PROPERTY DETAILS

PID: 31-139-80-00-10-410
Legal: HAY CREEK TOWNSHIP Section 10 PT NW1/4;
BEG @ PT 75' E OF SW COR; TH E712';
N916.50'; W712'; S916.50' TO PT OF BEG LESS R/W
2023 Taxes: \$391.01
Specials: None at this time
Zoned: CG – Commercial

» VIEW FROM WEST



JESSICA KNUTSON
Commercial Realtor

✉ jessica@knutsonteam.com
☎ 701-712-8100

FOR SALE

6341 RIDGEDALE STREET | BISMARCK, ND

» VIEW FROM EAST



JESSICA KNUTSON
Commercial Realtor

✉ jessica@knutsonteam.com
☎ 701-712-8100

FOR SALE

6341 RIDGEDALE STREET | BISMARCK, ND

» IN THE AREA

DINING | HOSPITALITY



SHOPPING | RETAIL



OFFICE | BANKING | MEDICAL



COMMUNITY | RECREATION



FOR SALE

6341 RIDGEDALE STREET | BISMARCK, ND

» NEIGHBORHOOD AERIAL



- 1 Bismarck Motor Company
- 2 Furniture Row
- 3 Tractor Supply
- 4 Ale Works
- 5 Tires Plus
- 6 Skyzone
- 7 Costco
- 8 T-Mobile
Aspen Dental
- 9 Mattress Firm
Sleep Number
AT&T
Verizon
Pancheros

- 10 Ross Dress for Less
Maurices
- 11 Kirkland's
Star Nails
- 12 Dollor Tree
Pizza Ranch
X-Golf
- 13 Dick's Sporting Goods
- 14 Michael's
Ulta Beauty
- 15 Walmart
- 16 America's Mattress
Gamestop

- 17 Starion Bank
- 18 Once Upon a Child
Dunn Brothers Coffee
- 19 Wingate by Wyndham
- 20 Sažon
- 21 Charras & Tequila
- 22 Buffalo Wings & Ring

FOR SALE

6341 RIDGEDALE STREET | BISMARCK, ND

DISCLOSURE

This information has been obtained from sources we consider reliable; however, we do not provide any guarantees, express or implied, regarding its accuracy. All details regarding square footage, taxes, special assessments, income, and expenses are approximate. Buyers or tenants are advised to conduct their own independent investigations and base their decisions on those findings.