

NORTH BISMARCK COMMERCIAL LOT
4412 SKYLINE CROSSINGS | BISMARCK, ND



HIGHLIGHTS

- Current Zoning: CG
- Access to State Street (Highway 83) via Skyline Crossings & Skyline Blvd
- Excellent Visibility from Highway 83 N
- Located just South of Walmart and Costco near major Hay Creek Shop Retailers such as Dick's Sporting Goods, Michaels, Ulta Beauty, etc. and across from Furniture Row & Tractor Supply.
- Lot Developed with paved access and utilities stubbed

LOT SIZE

51,440 SF | 1.18 Acres

PRICE

\$30 PSF

FOR SALE

NORTH BISMARCK COMMERCIAL LOT
4412 SKYLINE CROSSINGS | BISMARCK, ND

» PROPERTY DETAILS

PID: 1453-001-125

Legal: MEADOWLARKS COMMERCIAL 4th Block 1 Lot B of Lot 3

Zoning: Commercial General (CG)

Lot Size: 51,440 SF (1.18 Acres)

2023 Taxes: \$6,317.18

Special Assessments: \$218.63 installment: \$1,025.94 Remaining

JESSICA KNUTSON

Commercial Realtor, CCIM

✉ jessica@knutsonteam.com

☎ 701-712-8100

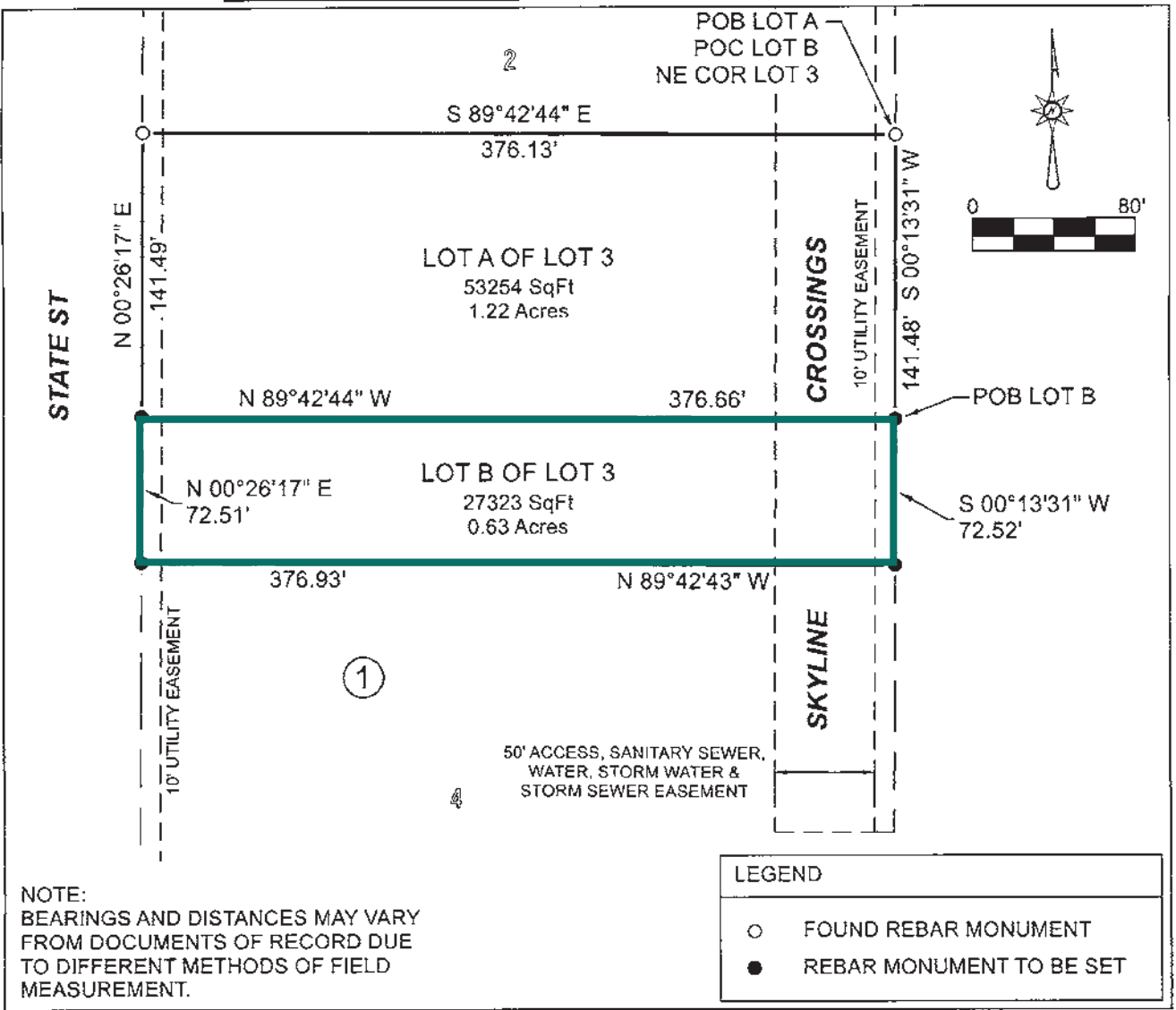
FOR SALE

NORTH BISMARCK COMMERCIAL LOT
4412 SKYLINE CROSSINGS | BISMARCK, ND

» PLAT MAP

PLAT OF IRREGULAR DESCRIPTION

LOTS A & B OF LOT 3, BLOCK 1
MEADOWLARK COMM. 4TH ADD. SW1/4 SECTION 15 TOWNSHIP 139 NORTH RANGE 80 WEST
PRESENT OWNER KOBE DEVELOPMENT LLC



LOTS A & B OF LOT 3
BLOCK 1, MEADOWLARK
LOT NUMBER COMMERCIAL 4TH ADDITION OF SW1/4 SECTION 15 TOWNSHIP 139 NORTH

70122

FOR SALE

NORTH BISMARCK COMMERCIAL LOT
4412 SKYLINE CROSSINGS | BISMARCK, ND

» NEIGHBORHOOD AERIAL



JESSICA KNUTSON
Commercial Realtor, CCIM

✉ jessica@knutsonteam.com
☎ 701-712-8100

FOR SALE

NORTH BISMARCK COMMERCIAL LOT
4412 SKYLINE CROSSINGS | BISMARCK, ND

» OVERHEAD AERIAL



STATE STREET

SITE

SKYLINE CROSSINGS

JESSICA KNUTSON
Commercial Realtor, CCIM

✉ jessica@knutsonteam.com
☎ 701-712-8100

FOR SALE

NORTH BISMARCK COMMERCIAL LOT
4412 SKYLINE CROSSINGS | BISMARCK, ND

» NEIGHBORHOOD AERIAL



JESSICA KNUTSON
Commercial Realtor, CCIM

✉ jessica@knutsonteam.com
☎ 701-712-8100

FOR SALE

NORTH BISMARCK COMMERCIAL LOT
4412 SKYLINE CROSSINGS | BISMARCK, ND

» DEMOGRAPHIC & INCOME PROFILE

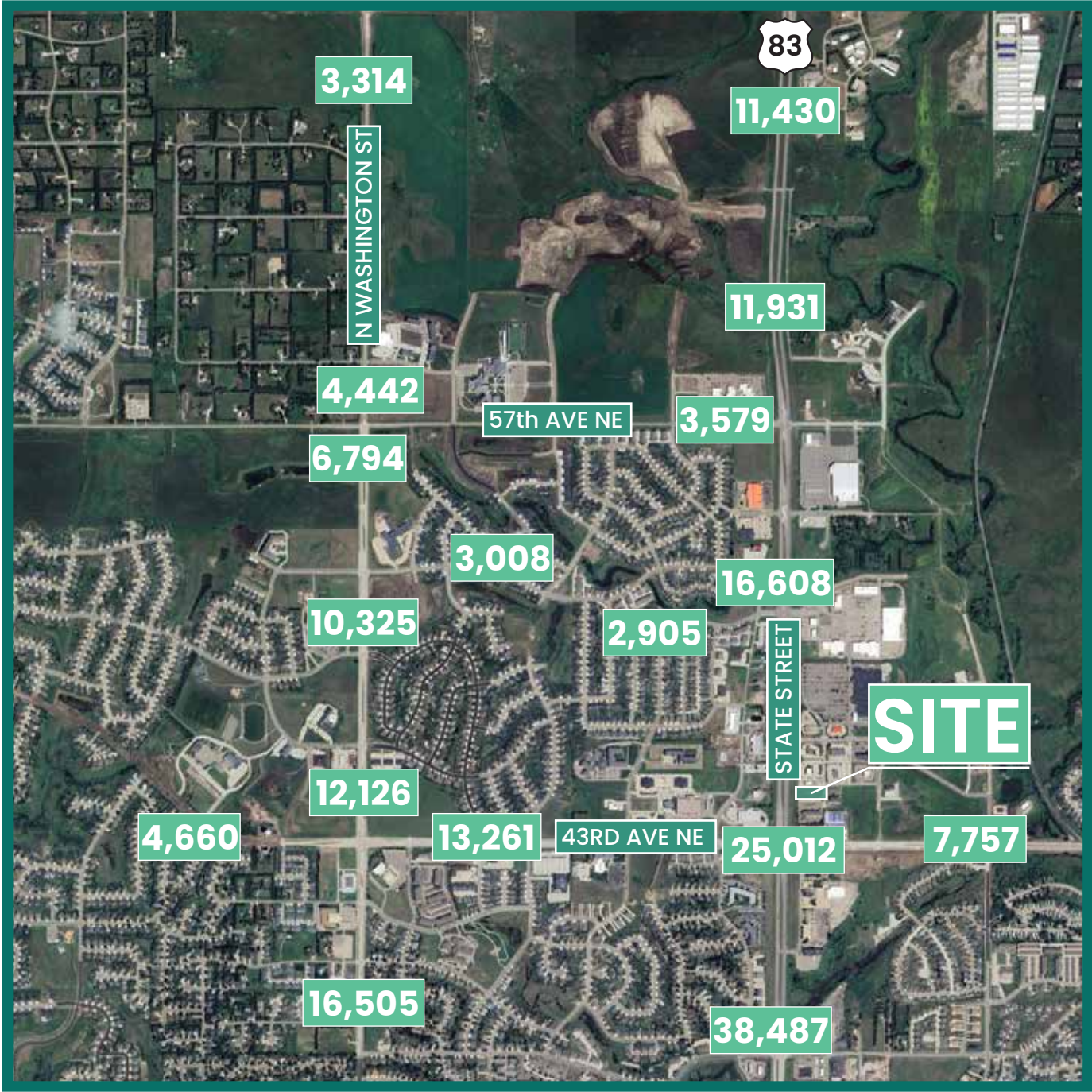
	3 MILE	5 MILE	10 MILE
2024 POPULATION	26,447	66,412	123,076
2029 POPULATION	27,427	68,953	127,734
2024 HOUSEHOLDS	11,301	29,929	54,612
2029 HOUSEHOLDS	11,664	30,942	56,604
2024 AVG HH INCOME	\$127,755	\$111,917	\$110,449
2029 AVG HH INCOME	\$145,629	\$127,567	\$125,937
2024 AVERAGE HOME VALUE	\$415,634	\$373,538	\$367,593
2029 AVERAGE HOME VALUE	\$425,362	\$385,193	\$381,575
2024 MEDIAN AGE	40.4	39.2	38.2
BUSINESSES	1,067	3,742	6,076
EMPLOYEES	17,616	58,093	84,013

Source: Esri Reports – 1019 64th Ave NE, Bismarck ND, April 2025

FOR SALE

NORTH BISMARCK COMMERCIAL LOT
4412 SKYLINE CROSSINGS | BISMARCK, ND

» TRAFFIC COUNTS - 2025



JESSICA KNUTSON
Commercial Realtor, CCIM

✉ jessica@knutsonteam.com
☎ 701-712-8100

FOR SALE

NORTH BISMARCK COMMERCIAL LOT
4412 SKYLINE CROSSINGS | BISMARCK, ND

» RESIDENTIAL DEVELOPMENT



HOUSING PROFILE – 3 MILE RADIUS

OCCUPANCY	2024	2029
TOTAL HOUSING UNITS	11,301	11,664
OWNER	7,773	8,211
RENTER	2,874	2,763

UNITS BY VALUE	2024	2029
\$300,000 - \$399,999	2,655	2,511
\$400,000 - \$499,000	2,523	2,891
\$500,000 +	1,294	1,503

Source: Esri Reports – 1019 64th Ave NE, Bismarck ND, April 2025

FOR SALE

NORTH BISMARCK COMMERCIAL LOT
4412 SKYLINE CROSSINGS | BISMARCK, ND

» RESIDENTIAL DEVELOPMENT CONTINUED

HOUSING PROFILE – 5 MILE RADIUS

OCCUPANCY	2024	2029
TOTAL HOUSING UNITS	29,929	30,942
OWNER	18,895	20,029
RENTER	8,943	8,713

UNITS BY VALUE	2024	2029
\$300,000 - \$399,999	6,043	5,991
\$400,000 - \$499,000	4,306	5,025
\$500,000 +	3,343	6,812

HOUSING PROFILE – 10 MILE RADIUS

OCCUPANCY	2024	2029
TOTAL HOUSING UNITS	54,612	56,604
OWNER	35,942	38,284
RENTER	15,070	14,546

UNITS BY VALUE	2024	2029
\$300,000 - \$399,999	9,690	9,631
\$400,000 - \$499,000	7,145	8,394
\$500,000 +	5,215	6,277

Source: Esri Reports – 1019 64th Ave NE, Bismarck ND, April 2025

FOR SALE

NORTH BISMARCK COMMERCIAL LOT
4412 SKYLINE CROSSINGS | BISMARCK, ND

» IN THE AREA

DINING | HOSPITALITY



SHOPPING | RETAIL



OFFICE | BANKING | MEDICAL



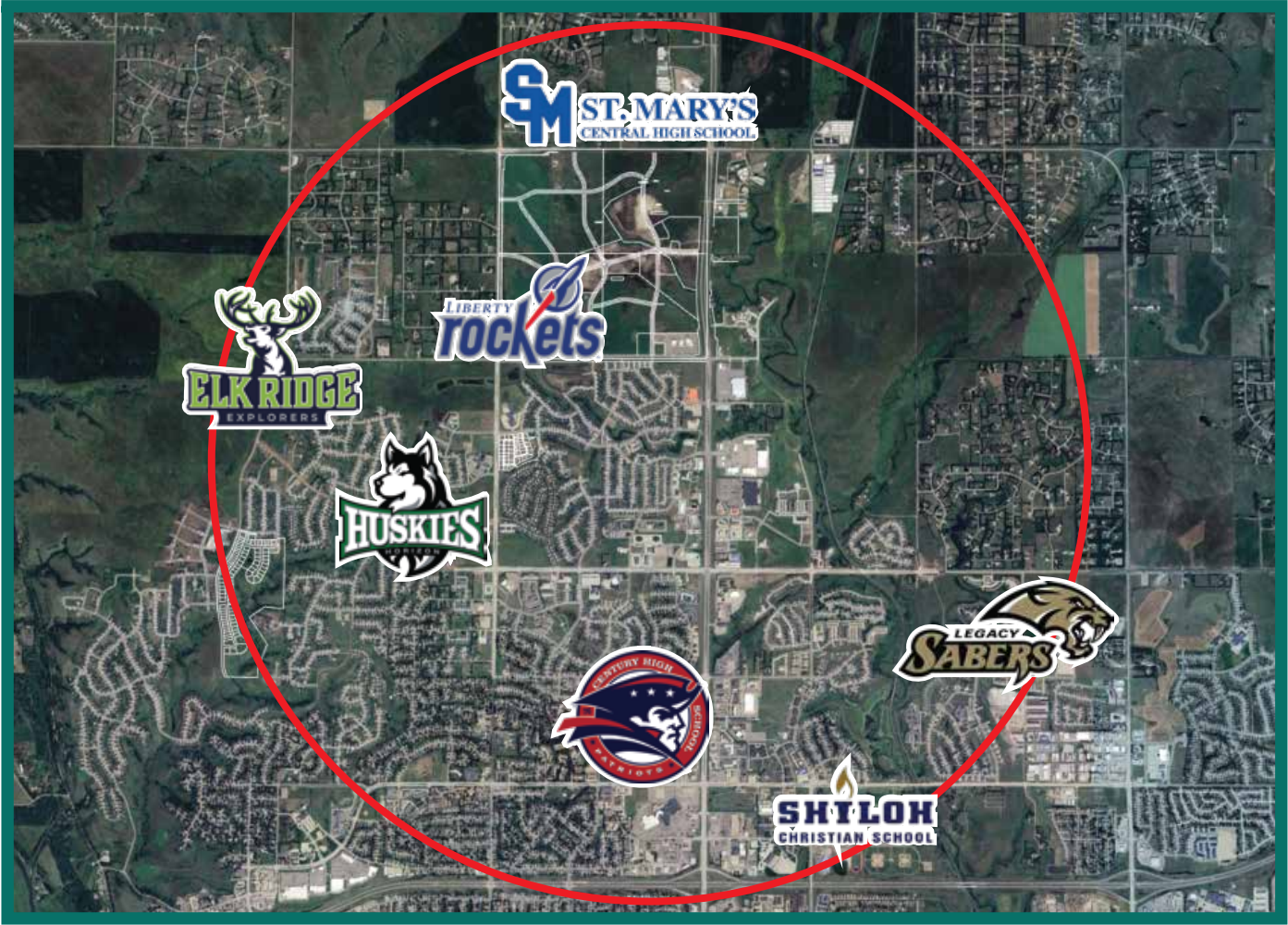
COMMUNITY | RECREATION



FOR SALE

NORTH BISMARCK COMMERCIAL LOT
4412 SKYLINE CROSSINGS | BISMARCK, ND

» SCHOOL ENROLLMENT – 3 MILE RADIUS



4 HIGH SCHOOLS
2 MIDDLE SCHOOLS
3 GRADE SCHOOLS

2024-2025 STUDENT ENROLLMENT

CENTURY HIGH SCHOOL	1,401
LEGACY HIGH SCHOOL	1,411
ST. MARY'S HIGH SCHOOL	336
SHILOH CHRISTIAN SCHOOL	633
HORIZON MIDDLE SCHOOL	1,059
LIBERTY ELEMENTARY SCHOOL	492
ELK RIDGE ELEMENTARY SCHOOL	516

JESSICA KNUTSON
Commercial Realtor, CCIM

✉ jessica@knutsonteam.com
☎ 701-712-8100

FOR SALE

NORTH BISMARCK COMMERCIAL LOT
4412 SKYLINE CROSSINGS | BISMARCK, ND

DISCLOSURE

This information has been obtained from sources we consider reliable; however, we do not provide any guarantees, express or implied, regarding its accuracy. All details regarding square footage, taxes, special assessments, income, and expenses are approximate. Buyers or tenants are advised to conduct their own independent investigations and base their decisions on those findings.

JESSICA KNUTSON

Commercial Realtor, CCIM

✉ jessica@knutsonteam.com

☎ 701-712-8100